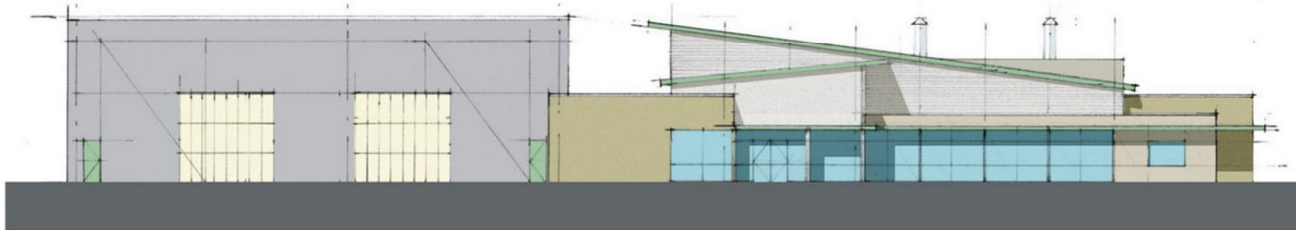


South Elevation



Building Plan

- Administrative and Service areas - 846 m²
- QC and R&D Labs - 407 m²
- GMP Production areas - 382 m²
- Class 100,000 Production areas - 84 m²
- Warehouse - 224 m²
- Utilities - 183 m²



Production Equipment

- Reactors**
Hastelloy and Glass Lined reactors ranging from 50 to 800 lts
- Dryers**
1 Hastelloy Double Cone Dryer, 240 lts
1 Halar coated Stainless Steel Shelf dryer, 200 lts
- Filters**
3 Hastelloy Monoplate Filters ranging from 0.25 to 0,5 sqm

September 2001